



# Pharmacy Foundation Pathway

Start Your Future Career in Pharmacy Here

**DIFC** UNIVERSITY  
FOUNDATION  
PROGRAMME

[www.difc.ie](http://www.difc.ie)

**NCUK**  
THE UNIVERSITY CONSORTIUM

- ✓ Expert university placement support
- ✓ One school. Endless opportunities
- ✓ Ongoing support & tutoring



# DIFC

UNIVERSITY  
FOUNDATION  
PROGRAMME

# DIFC UNIVERSITY FOUNDATION PROGRAMME

## Pharmacy Foundation Pathway

Pharmacy is a diverse and rewarding career, with opportunities to get involved in patient care, scientific research and innovation. It's a career where you can have a positive impact on helping patients to feel better and get well as quickly as possible.

There is also demand for Pharmacy graduates all over the world, so getting the right qualification from a globally recognized university is the best place to start.

## Our Pharmacy Partners

The Pharmacy Foundation Pathway offered by DIFC Ireland gives you more university options than any other programme. Our Pharmacy partners span across Ireland, UK and mainland Europe.

### Irish Partners



### NCUK Partners



### European Partners



# What Makes DIFC Different

01

## An Experience You'll Never Forget

Your time with DIFC will equip you with vital skills to succeed at university. But it will do so much more than that. We help you to grow as a person and as a thinker – enriched with a network of friends, contacts and experiences that will be with you through your career.

02

## Support You Every Step of the Way

Whether you are unsure exactly what you want to study or need to prepare your visa application, we will be there to hold your hand throughout the process. We support you not just academically, but also personally so that you are looked after, enjoy the whole experience and can deliver your best.

03

## More Options Than Any Other Foundation

As the exclusive delivery centre for NCUK, DIFC offers you full guaranteed access to the NCUK university partner network, in addition to DIFC's own Irish and European university partners – giving you the best chance of securing a University offer.

Ireland is also home to many of the world's top Pharma companies, giving you the opportunity to gain global work experience as part of your studies.



## Did You Know?

Graduates of MPharm degrees from Ireland or UK can stay and gain work experience for up to 2 years following graduation.\*

\* Work permit applies to country of graduation

# How does the Pharmacy Pathway Works?

The NCUK International Foundation Year offered by DIFC is a great start for students seeking to study Pharmacy or another science-related degree. It is designed specifically by universities to help international students gain entry to and succeed in their university studies.



## Complete High School qualification

IGCSEs and  
O Levels  
accepted

## English Language Qualification

Minimum IELTS  
5.0 overall

## NCUK International Foundation Year

English for  
Academic  
Purposes

Mathematics  
for Science

Chemistry

Biology

**Progress to Pharmacy Degree\***

\*Subject to meeting university admission requirements



# What Will I Study?

You will study four modules on the NCUK IFY programme

## Mathematics for Science

- Linear Equations
- Simple Probability
- Quadratic, Equations, Inequalities & Remainder Theorem
- Binomial Expansions, Sequences & Series
- Indices, Exponential & Logarithmic Functions
- Trigonometric Functions
- Calculus – Differentiation & Integration
- Statistics Methods & Distributions

## Chemistry

- Physical chemistry
- Organic chemistry
- Inorganic chemistry
- The experimental method
- Interpretation of Scientific Data

## Biology

- Structure & Function of Biological Molecules
- Organs, Tissues, Cellular Organisation & Cell Structure
- Cell Membrane Structure & Transport
- Leaf structure, Transpiration & Photosynthesis
- Respiration & Energy
- Interpretation of Scientific Data
- The Cell Cycle & Cellular Replication
- Physiological systems
- Genetics & gene technology

## English for Academic Purposes

- Academic Reading, Writing, Listening & Speaking
- Using language for a range of academic purposes, including: description; comparison; explanation; evaluation; persuasion; problem solving; cause & effect; and argument
- Selecting information and ideas from different sources & using this to support an academic argument
- Reflecting on & critiquing academic texts
- Communicating more effectively in a global & academic environment
- Developing understanding of the conventions of good academic practice

# UNIVERSITY FOUNDATION PROGRAMME



## Quick Facts

- Age: **17+**
- Education: **Completion of a minimum of 11 years of schooling, subject to entry requirements**
- English language level: **IELTS 5.0 or equivalent**
- Intake: **September and January**
- Centre: **Dublin or Cork**
- Duration: **6 or 9 months**
- Tuition Fees: **€15,600 plus registration**
- Average Class Size: **Max 15 students**

## Sample Timetable

	9.00-9.50	10.00-10.15	11.00-11.50	12.00-12.50	13.00-14.00	14.00-14.50	15.00-15.50	16.00-16.50
Mon	<b>EAP</b>		<b>Maths</b>		<b>Lunch</b>	<b>Biology</b>		<b>Maths Support</b>
Tue	<b>Chemistry</b>		<b>Biology</b>		<b>Lunch</b>	<b>Maths</b>		<b>Tutorial/ Private Study</b>
Wed	<b>Individual Tutorial</b>	<b>Maths Tutorial</b>	<b>Private Study</b>	<b>Chemistry Tutorial</b>	<b>Lunch</b>	<b>Group Tutorial</b>	<b>Private Study</b>	<b>Chemistry Drop-in</b>
Thur	<b>EAP</b>		<b>Chemistry</b>		<b>Lunch</b>	<b>Private Study</b>	<b>Group Tutorial</b>	<b>Private Study</b>
Fri	<b>Private Study</b>			<b>Assessment Support</b>	<b>Lunch</b>	<b>EAP</b>		

# €2,000 Pharmacy Pathway Scholarship



Students on the Pharmacy Pathway will automatically be awarded a €2,000 scholarship\* against their Foundation Year tuition fees and study in our DIFC Cork centre for their Foundation programme each September.

By studying in Cork, students will have close connections and visits from some of our Pharmacy partners and will have access to laboratories at University College Cork for science practicals.

January intake students must take the programme in Dublin and no scholarships are available.

\* Students can only avail of one scholarship in an academic year.



“My Foundation studies with DIFC gave me the best preparation! I have achieved first-class grades in my first and second years so far at LJMU and I strongly believe this would have not been possible without my foundation programme at DIFC. Learning vital research skills and tools has been a lifesaver for my research papers at university and helped me save a significant amount of time.

Being a non-native English speaker, the EAP classes have helped me develop my academic writing skills which has been key for my success during university. More importantly, the personal support I received from the team at DIFC has been essential to help me accustom to life in a new environment and set me up for success.”

**Marc Nouagbe**

International Foundation Year – Science 2017

Now studying Pharmacy at Liverpool John Moores University



# Applying to Pharmacy University

During your studies at DIFC, you will receive tailored placement support and advice to help you choose the right degree for your career path.

## 13. Congrats, you're off to University!

### 1. Career Planning:

Discuss personal and career objectives

### 2. Research:

Explore course options and Universities

### 3. Compare:

Review entry requirements against your predicted grades

### 4. Personal Statement:

Learn how to write a stand-out personal statement

### 5. DIFC University Fair:

Meet with university representatives and learn about potential scholarships

### 6. Application Submission:

Make 3 university applications

### 7. Conditional Offers:

Get your conditional offers

### 8. Offer Response:

Decide on your first (CF) and insurance (CI) choices

### 9. Accommodation & Visa:

DIFC provide support and advice to help you apply for accommodation and prepare your visa application if you are studying outside of Ireland

### 10. Results:

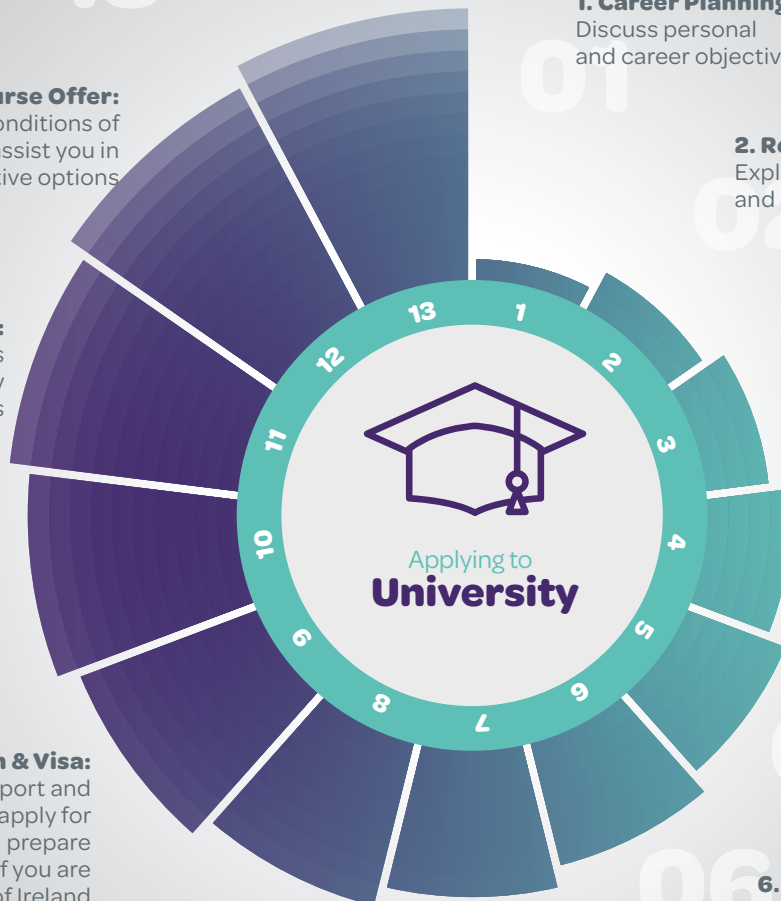
DIFC submits your results to the universities. If you meet the conditions of your CF/CI choice, your offer is made unconditional

### 11. Unconditional Offer:

Your place at university is confirmed once you pay your tuition fees

### 12. Change of Course Offer:

If you didn't meet the conditions of your offer, DIFC will assist you in applying for alternative options





# Beyond Foundation

**100%** of students who successfully pass are guaranteed a place at one of our University partners



**674** students placed in Irish universities

**108** students progressed to Top 100 ranked Universities worldwide\*



**1070** students successfully progressed to university



**47%** of UK-bound students progressed to Russell Group universities



**190** students successfully placed onto Medicine degrees



**273** students progressed to UK universities



Since 1987, NCUK has placed over

**30,000**

international students on to university degree courses

Student placement statistics from 2009 – 2019

\* QS Rankings 2020  
Students placement statistics from 2009-2019

## Your NCUK International Foundation Year qualification can also lead to degrees in:



**Biomedical Science**



**Allied Health**



**Physiotherapy**



**Biochemistry**



**Biology**



**Engineering & Technology**



**Chat to DIFC**  
**Ambassadors directly at**  
[www.difc.ie/chat](http://www.difc.ie/chat)

# Get in Touch



We'd Love to Hear from You

**DIFC** UNIVERSITY  
FOUNDATION  
PROGRAMME

#### **DIFC Ireland**

Telephone: +353 45 866671  
WhatsApp: +353 83 8534760  
Email: [info@difc.ie](mailto:info@difc.ie)  
Website: [www.difc.ie](http://www.difc.ie)

#### **Social Media**

 Facebook:  
[www.facebook.com/difcireland](http://www.facebook.com/difcireland)  
 Instagram:  
[@difcireland](https://www.instagram.com/difcireland)