

Undergraduate Pathways

NCUK International Foundation Year

DIIFC

UNIVERSITY
FOUNDATION
PROGRAMME

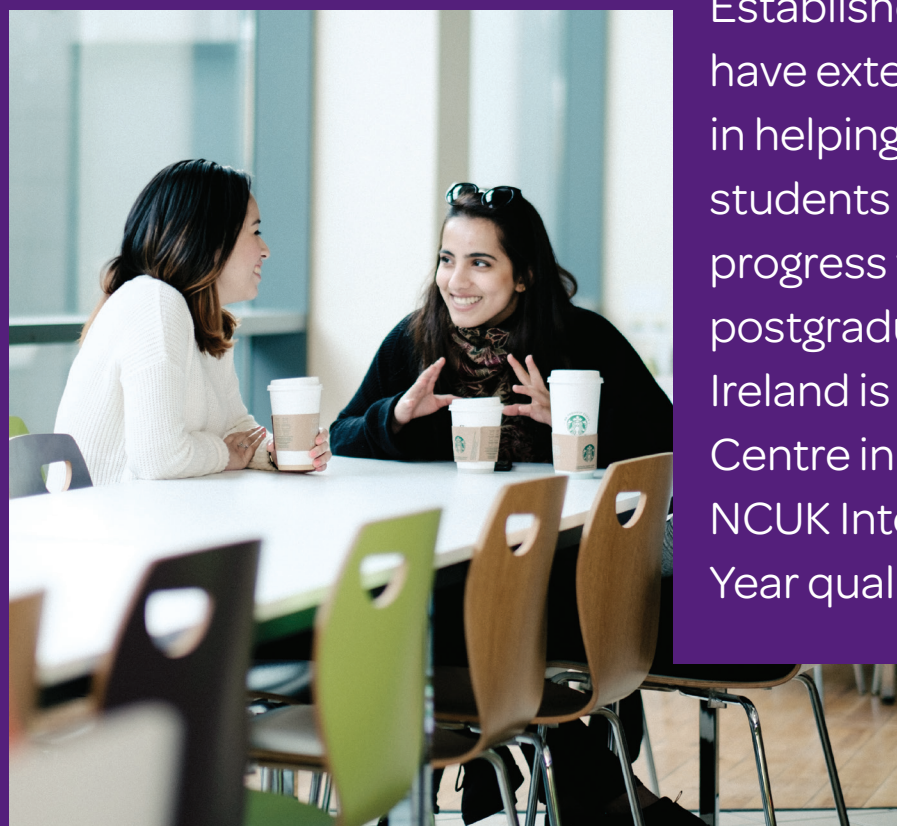
In partnership with

NCUK

THE UNIVERSITY CONSORTIUM

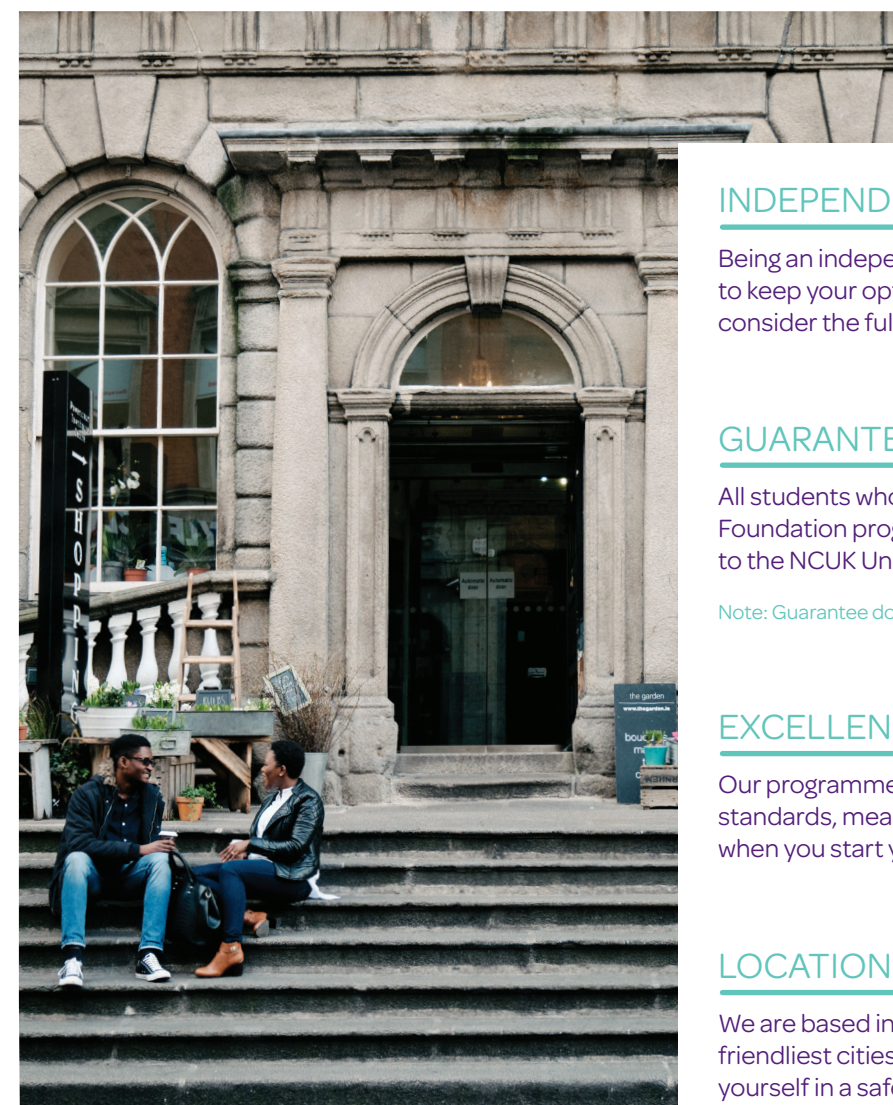
DIFC Ireland offers international students a pathway to study in leading Universities across Ireland, the UK and worldwide.

Established in 1999, DIFC Ireland have extensive experience in helping international students successfully progress to undergraduate and postgraduate degrees. DIFC Ireland is the only NCUK Study Centre in Ireland offering the NCUK International Foundation Year qualification.



More than a pathway

Why Study with DIFC Ireland?



INDEPENDENCE

Being an independent Foundation provider, we help to keep your options open. This means that you can consider the full NCUK University Network for your degree.

GUARANTEED

All students who successfully complete our Foundation programmes have guaranteed access to the NCUK Universities.

Note: Guarantee does not apply to Medicine or Dentistry.

EXCELLENCE

Our programmes are delivered to the highest academic standards, meaning you'll be one step ahead of the pack when you start your University degree.

LOCATION

We are based in Dublin, Ireland – renowned as one of the friendliest cities in the world. In Dublin, you can immerse yourself in a safe, cosmopolitan city with a vibrant culture.

About NCUK

NCUK is a consortium of leading universities dedicated to giving international students guaranteed access to universities and helping students succeed when they get there.

NCUK qualifications are recognised by NCUK Universities and by most others across the UK, including many in the Russell Group (UK's Ivy League), and also by universities internationally.

Since 1987, NCUK has helped over 35,000 international students gain guaranteed access to leading universities worldwide.

What is the International Foundation Year?



DIFC Ireland has partnered with NCUK to offer the International Foundation Year (IFY), a qualification designed for international students to help you succeed at university.

FAST TRACK

The IFY is designed to be completed in one academic year, helping you progress to university as quickly as possible. Although completed in half the time, the IFY is assessed by UK NARIC as equivalent to A-Levels and is recognised by universities worldwide.

PATHWAYS

Students will study one of four pathways that lead to thousands of different degree programmes. The subject modules studied relate directly to the pathway, providing you with a solid preparation for your university studies.

SUCCESS

Part of the IFY is supporting you to develop vital skills that you'll need to be a successful, independent student at university. We do this by going beyond what you will find in other foundation programmes. We support you not just academically but also personally so that you are looked after, enjoy the whole experience and can deliver your best.

NCUK IFY vs A-Levels: Quick Facts

IFY	A LEVELS
Completed in 1 academic year	Completed in 2 academic years
Designed entirely for international students	Designed primarily for UK students
Content directly linked to intended degrees	Some content related to intended degree, but much irrelevant material
Emphasis on developing practical skills needed to succeed at university	Focused on subject material only
Assessed by 70% exams and 30% coursework	In most cases, assessed by 100% exams
Two intakes in October and January	One intake each year
English language module integrated into course	IELTS 'added on' to course as a stand-alone qualification
Guaranteed offers from NCUK Universities	No university offers guaranteed



DIFC offers four streams for the International Foundation Year

Business

Engineering
& Technology

Science

Health Science

Your Guaranteed Place

Studying the IFY guarantees you access to leading universities across Ireland, UK and worldwide.

NCUK Universities

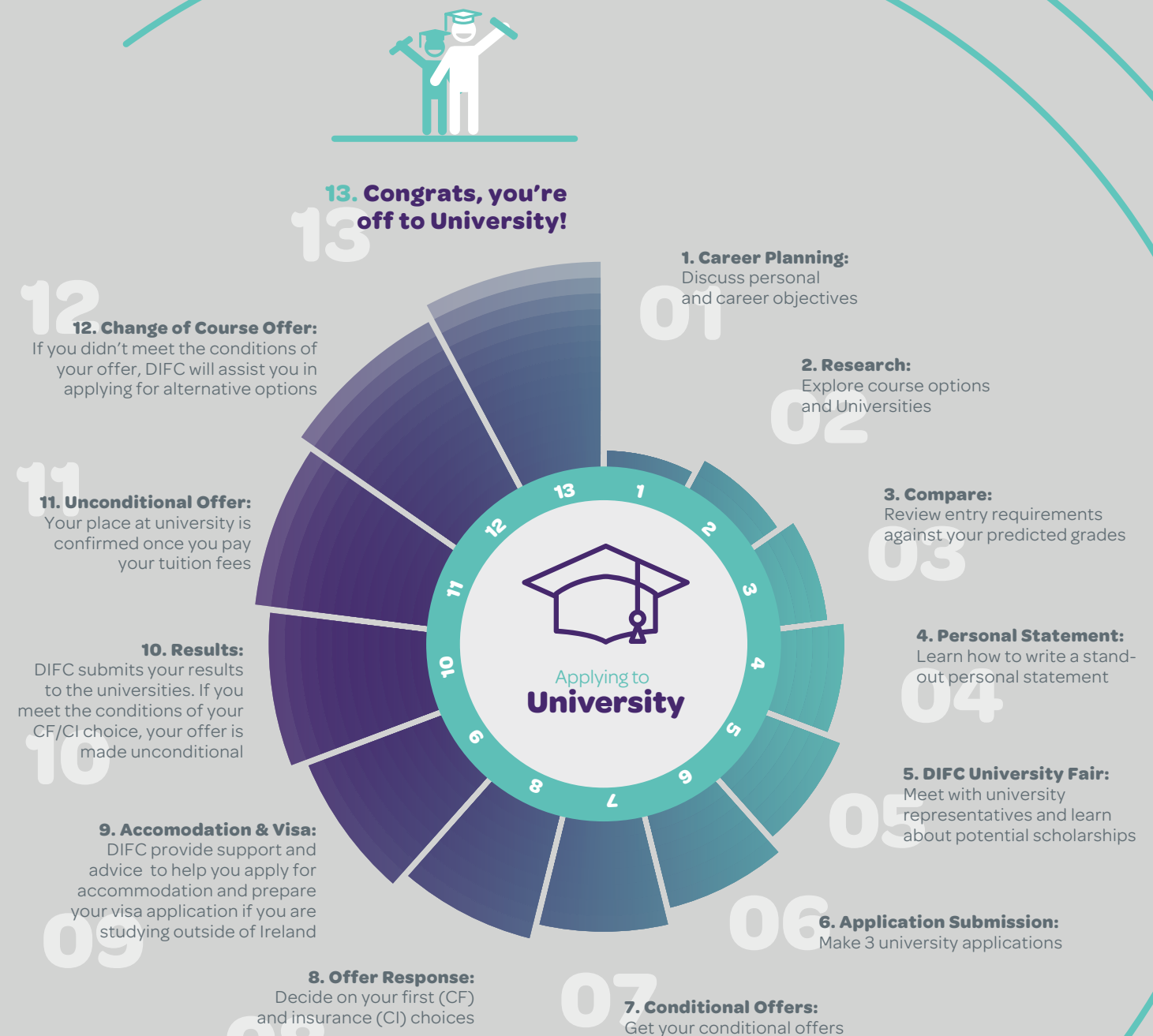


Irish Universities



Applying to University

Search your degree options with DIFC's Course Finder www.difc.ie/course-finder



BUSINESS Pathway



The IFY Business pathway is the ideal choice if you are seeking to pursue a career in business, finance or any area of management.

You will study four modules on the IFY Business programme:

Mathematics for Business

- Linear Equations
- Simple Probability
- Quadratic, Equations, Inequalities & Remainder Theorem
- Binomial Expansions, Sequences & Series
- Indices, Exponential & Logarithmic Functions
- Trigonometric Functions
- Calculus – Differentiation & Integration
- Introduction to Statistics
- Further Probability & Set Theory
- Correlation, Linear Regression & Time Series
- Probability Distributions

Business Studies

- Business structures
- Marketing
- Operations
- Human resources
- Finance
- Law

English for Academic Purposes

- Academic Reading, Writing, Listening & Speaking
- Using language for a range of academic purposes, including: description; comparison; explanation; evaluation; persuasion; problem solving; cause & effect; and argument
- Selecting information and ideas from different sources & using this to support an academic argument
- Reflecting on & critiquing academic texts
- Communicating more effectively in a global & academic environment
- Developing understanding of the conventions of good academic practice

Economics

- Economics as a social science
- The basic economic problem
- Microeconomics
- Macroeconomics
- Economic data analysis
- Current economics issues & trends

Quick Facts

Age: 17+

Education: Completion of a minimum of 11 years of schooling, subject to entry requirements

English language level: IELTS 5.0 or equivalent

Intake: October and January

Centre: Dublin

Duration: 6 or 8 months

Tuition Fees: €12,600 plus registration

Average Class Size: Max 15 students

In addition to Business, Accounting, Finance and Economics degrees, students also progress to:

- Social Studies
- Psychology
- Law
- Mathematical Sciences
- Creative Arts & Design
- International Relations
- Hospitality Management
- Architecture, Building & Planning

Student Testimonial



“DIFC has been a challenging and fruitful time for me. But when I received my University admission letter, I felt it was all worth it. During the seven months of Foundation Business study, I learned a lot of knowledge that I could apply in my freshman year and made a lot of friends. The teachers are professional and know what they were doing. They also gave me advice and supporting with applying for university. I am now studying at the University of Sheffield in the UK. The weather and culture in Sheffield are hardly different from Dublin.”

Ying Hao
Business Management & Economics,
The University of Sheffield

ENGINEERING & TECHNOLOGY Pathway



The IFY Engineering & Technology pathway is particularly suited to students who are seeking to pursue a career in any engineering discipline or computer science field.

You will study four modules on the IFY Engineering & Technology programme:

Mathematics for Science

- Linear Equations
- Simple Probability
- Quadratic, Equations, Inequalities & Remainder Theorem
- Binomial Expansions, Sequences & Series
- Indices, Exponential & Logarithmic Functions
- Trigonometric Functions
- Calculus – Differentiation & Integration
- Statistics Methods & Distributions

Physics

- Mechanics
- Materials
- Electricity
- Fields
- Waves
- Atoms

English for Academic Purposes

- Academic Reading, Writing, Listening & Speaking
- Using language for a range of academic purposes, including: description; comparison; explanation; evaluation; persuasion; problem solving; cause & effect; and argument
- Selecting information and ideas from different sources & using this to support an academic argument
- Reflecting on & critiquing academic texts
- Communicating more effectively in a global & academic environment
- Developing understanding of the conventions of good academic practice

Chemistry

- Physical chemistry
- Organic chemistry
- Inorganic chemistry
- The experimental method
- Interpretation of Scientific Data

Quick Facts

Age: 17+
Education: Completion of a minimum of 11 years of schooling, subject to entry requirements
English language level: IELTS 5.0 or equivalent
Intake: October and January
Centre: Dublin
Duration: 6 or 8 months
Tuition Fees: €15,600 plus registration
Average Class Size: Max 15 students

Many students progress to all disciplines of Engineering and Computer Sciences degrees. Other areas of progression include:

- Computer Games Design
- Software Development
- Architecture, Building & Planning
- Mathematical Sciences
- Physical Sciences



Student Testimonial

“I’ve always wanted to further my studies overseas so that I got to learn about different cultures and meet with different people. After some research, I was quickly attracted by the peacefulness and hospitality of the people in Ireland. Treasure the time here as 9 months is a short time. Try your very best to enjoy your life here. This small city has tons of fun waiting for the explorer. So, keep exploring.”

Li Win Ang, Malaysia
Computer Science, University of Manchester

SCIENCE Pathway



The IFY Science pathway is a great option for students seeking to pursue a career in any Science field.

Students looking to study Medicine or Dentistry need to study the IFY Health Science pathway (see p. 14).

You will study four modules on the IFY Science programme:

Mathematics for Science

- Linear Equations
- Simple Probability
- Quadratic, Equations, Inequalities & Remainder Theorem
- Binomial Expansions, Sequences & Series
- Indices, Exponential & Logarithmic Functions
- Trigonometric Functions
- Calculus – Differentiation & Integration
- Statistics Methods & Distributions

Biology

- Structure & Function of Biological Molecules
- Organs, Tissues, Cellular Organisation & Cell Structure
- Cell Membrane Structure & Transport
- Leaf structure, Transpiration & Photosynthesis
- Respiration & Energy
- Interpretation of Scientific Data
- The Cell Cycle & Cellular Replication
- Physiological systems
- Genetics & gene technology

English for Academic Purposes

- Academic Reading, Writing, Listening & Speaking
- Using language for a range of academic purposes, including: description; comparison; explanation; evaluation; persuasion; problem solving; cause & effect; and argument
- Selecting information and ideas from different sources & using this to support an academic argument
- Reflecting on & critiquing academic texts
- Communicating more effectively in a global & academic environment
- Developing understanding of the conventions of good academic practice

Chemistry

- Physical chemistry
- Organic chemistry
- Inorganic chemistry
- The experimental method
- Interpretation of Scientific Data

Quick Facts

Age: 17+

Education: Completion of a minimum of 11 years of schooling, subject to entry requirements

English language level: IELTS 5.0 or equivalent

Intake: October and January

Centre: Dublin

Duration: 6 or 8 months

Tuition Fees: €15,600 plus registration

Average Class Size: Max 15 students

Students may progress to a whole range of Science-related degrees such as Biological Sciences, Genetics, Pharmacy, Speech & Language Therapy and Occupational Therapy, plus many more. Other areas of progression include:

- Law
- Nursing
- Engineering & Technology
- Business
- Psychology

Student Testimonial



“My Foundation studies with DIFC gave me the best preparation! I have achieved first-class grades in my first and second years so far at LJMU and I strongly believe this would have not been possible without my foundation programme at DIFC. Learning vital research skills and tools has been a lifesaver for my research papers at university and helped me save a significant amount of time.

Being a non-native English speaker, the EAP classes have helped me develop my academic writing skills which has been key for my success during university. More importantly, the personal support I received from the team at DIFC has been essential to help me accustom to life in a new environment and set me up for success.”








Marc Nouagbe, Benin
Pharmacy, Liverpool John Moores University

HEALTH SCIENCE Pathway

The IFY Health Science pathway is a specialised preparation programme for students looking to study Medicine or Dentistry.

You will study the same subject modules as the IFY Science pathway (p. 12).

Medical Partners

 RCSI	 RCSI + UCD MALAYSIA CAMPUS <small>(formerly Penang Medical College)</small>	 Queen Mary <small>University of London</small>
DEGREE: MB BCh BAO DURATION: 6 years LOCATION: Dublin	DEGREE: MB BCh BAO DURATION: 6 years LOCATION: 3.5 years in Dublin, 2.5 years in Penang, Malaysia	DEGREE: MBBS Medicine DURATION: 5 years LOCATION: Gozo, Malta
 St. George's University <small>THINK BEYOND Grenada, West Indies</small>	 uclan	 LITHUANIAN UNIVERSITY OF HEALTH SCIENCES
DEGREE: Doctor of Medicine DURATION: 5 or 6 years LOCATION: Grenada or Newcastle, UK	DEGREE: MBBS Medicine DURATION: 5 years LOCATION: Lancashire	DEGREE: MSc in Health Sciences, Doctor DURATION: 6 years LOCATION: Kaunas, Lithuania
 CHARLES UNIVERSITY	UNIVERSITY OF DEBRECEN	
DEGREE: MUDr DURATION: 6 years LOCATION: Hradec Králové, Czech Republic	DEGREE: Doctor of Medicine DURATION: 6 years LOCATION: Debrecen, Hungary	

Dentistry Partners

 University of BRISTOL	 CHARLES UNIVERSITY	UNIVERSITY OF DEBRECEN	 LITHUANIAN UNIVERSITY OF HEALTH SCIENCES
---	--	-----------------------------------	--

Quick Facts

Age: 17+

Education: Completion of a minimum of 11 years of schooling, subject to entry requirements

English language level: IELTS 5.5 or equivalent

Intake: October and January

Centre: Dublin

Duration: 6 or 8 months

Tuition Fees: €17,800 plus registration

Average Class Size: Max 15 students

Since 2019, over **70%** of students successfully placed onto Medicine or Dentistry degrees.

Other areas of progression include

- Biological Sciences
- Pharmacy
- Allied Health
- Genetics

Note: Placement guarantee does not apply to Medicine or Dentistry.

Student Testimonials



"There is only one feeling that can describe my time in DIFC – nostalgia. It was where I met such passionate educators, understood real friendship, and explored my dreams. Until today, I am forever grateful for the experience that DIFC gifted me – and would gladly relive those moments again."

Nor Aimi Binti Sefex Afenday
Medicine, St George's University, Grenada



"I have thoroughly enjoyed my time at DIFC not just because the staff were wonderful, but because of the amazing experience I've gotten from being a part of the students there.

The NCUK programme was excellent. I got the opportunity to do both assignments and exams. It really helped me in university now because I am expected to do assignments and give presentations and such.

The staff in DIFC are truly excellent. I felt they truly do care for each and every one of their students, trying their hardest to educate us in the best way possible."

Ali Rifai, Jordan
Medicine, RCSI Dublin

Our Students' Success



SUCCESSFUL STUDENT PLACEMENTS (2009 -2020)			
	IFY	PMP	TOTAL
Ireland & Others	615	271	886
UK	176	123	299
Overall Success	791	394	1185

223 students
successfully
progressed to
Medicine or
Dentistry degrees

9 NCUK Universities are ranked
in the **top 100**
Universities worldwide

41% of UK-bound students
progressed to **top 100**
ranked universities
(excluding Medicine students)

SAMPLE PLACEMENTS FROM OUR CLASS OF 2020

Stream	Nationality	University	University Course
Business	Ukrainian	Aston University	International Business and Modern Languages Spanish
Business	South Korean	University of Leeds	Environment and Business
Business	Malaysian	Queen's University Belfast	LLB Law
Business	Chinese	NUI Galway	Commerce
Business	Nigerian	Maynooth University	Business Management
Business	Chinese	University College Cork	Food Marketing and Entrepreneurship
Engineering	Chinese	Sheffield Hallam University	Computer Science
Engineering	Chinese	Queen's University Belfast	Computer Science
Engineering	Malaysian	University of Kent	Architecture
Engineering	South African	University of Manchester	Computer Systems Engineering
Engineering	Vietnamese	University College Cork	Data Science & Analytics
Science	Malaysian	Maynooth University	Psychology
Science	Nigerian	Royal College of Surgeons in Ireland	Pharmacy
Science	Kuwaiti	University College Cork	Nutritional Sciences
Health Science	Emirati	St George's University, Grenada	Medicine
Health Science	Malaysian	RCSI & UCD Malaysia Campus	Medicine
Health Science	Ghanaian	University College Cork	Medicine
Health Science	Saudi Arabian	Charles University, Hradec Kralove	Medicine
Health Science	Malaysian	University of Central Lancashire	Medicine



Fees

IFY Business	€12,600
IFY Engineering & Technology / Science	€15,600
IFY Health Science	€17,800

Other Fees Include

NCUK Registration & Examination Fee
(including Learner Protection):

- IFY €1,540
- IFY Health Science €1,895

Course Materials €200

Medical Insurance €200

Fees stated are for 2021/22 Academic Year and are subject to change.

Accommodation

Moving to a new country is exciting, but it can also be a little daunting. Here at DIFC, we will help you find the perfect home for your time in Ireland.



	UNINEST NEW MILL	GRIFFITH HALLS OF RESIDENCE	HOMESTAY
Overview	TYPE: Off-Campus Student Accommodation DISTANCE: 10 minute walk ROOMS: Private Ensuite COST: From €264 per week	TYPE: On-Campus DISTANCE: 1 minute walk ROOMS: Private Ensuite & Twin Share COST: €266 per week for Private Ensuite or €162 per week for Twin Share	TYPE: Family home DISTANCE: 30-45 minute on public transport ROOMS: Private room, sometimes with shared bathroom COST: €700 per 4 weeks plus €50 booking fee (€800 for minors)
Why Live Here	All bills included Social events for residents On-site gym Secure access Accepts 17 year olds	Convenience of living on-campus Affordable room options 24 hour security on site	Home environment Morning and evening meals provided Opportunity to improve English speaking skills and get to know Dublin from a local perspective



UNIVERSITY
FOUNDATION
PROGRAMME



You must provide the following supporting documents with your application:

- ✓ A copy of your passport
- ✓ Your High School results or progress reports
- ✓ A valid English Language certificate (IELTS, Duolingo English Test, TOEFL or Pearson accepted)

How to Apply

To submit an application to DIFC Ireland, you can:

Apply directly online at www.difc.ie/apply-online

or

Apply through one of our in-country recruitment partners

(for your local representative, see back cover)

Frequently Asked Questions

Can I join the IFY without completing high school?

Successful applicants should have completed a high school qualification from their home country, normally 12 years. There may be exceptions on a case-by-case basis, and in such cases progression may be limited. Full entry requirements can be found at www.difc.ie/entry-requirements/

When will I receive my conditional offers to university?

During the IFY, we will help you to assess your university options and submit your university applications. You will then receive your conditional offers, subject to your final IFY grades before you sit your final IFY examinations.

What happens if I don't achieve the results I was expecting?

Normally, you would have insurance choices already submitted, however if your final grades do not meet any of your offers, then the DIFC placement team will advise you on your options and make any necessary applications to secure you a suitable offer.

Can I apply to non-partner universities?

Between DIFC and NCUK, you have access to over 60 universities worldwide, however each year students do successfully apply to non-partner universities. We would encourage you to discuss your options with your DIFC tutor and prioritise partner universities to ensure that you secure a place. DIFC can also support you with the appropriate letters and documentation should you also wish to apply to non-partner universities.

How do I apply for a visa to travel to Ireland?

Depending on your nationality, you may require a visa to travel to Ireland for study purposes. Our highly skilled and trained staff will support and guide you in the preparation of your visa application.

More than a pathway

Apply today to start your journey with
DIFC at www.difc.ie

Tel: +353 (0)45 866671

Email: info@difc.ie

DIFC Local Representative:

Facebook / LinkedIn / Youtube: **DIFC Ireland**

Twitter / Instagram: **@DIFCIreland**

www.difc.ie