



Pharmacy Foundation Pathway

Start Your Future Career in Pharmacy Here

DIFC UNIVERSITY
FOUNDATION
PROGRAMME

www.difc.ie

NCUK
THE UNIVERSITY CONSORTIUM

- ✓ Expert university placement support
- ✓ One school. Endless opportunities
- ✓ Ongoing support & tutoring



DIFC

UNIVERSITY
FOUNDATION
PROGRAMME

DIFC UNIVERSITY FOUNDATION PROGRAMME

Pharmacy Foundation Pathway

Pharmacy is a diverse and rewarding career, with opportunities to get involved in patient care, scientific research and innovation. It's a career where you can have a positive impact on helping patients to feel better and get well as quickly as possible.

There is also demand for Pharmacy graduates all over the world, so getting the right qualification from a globally recognized university is the best place to start.

Our Pharmacy Partners

The Pharmacy Foundation Pathway offered by DIFC Ireland gives you more university options than any other programme. Our Pharmacy partners span across Ireland, UK and mainland Europe.

Irish Partners



NCUK Partners



European Partners



What Makes DIFC Different

01

An Experience You'll Never Forget

Your time with DIFC will equip you with vital skills to succeed at university. But it will do so much more than that. We help you to grow as a person and as a thinker – enriched with a network of friends, contacts and experiences that will be with you through your career.

02

Support You Every Step of the Way

Whether you are unsure exactly what you want to study or need to prepare your visa application, we will be there to hold your hand throughout the process. We support you not just academically, but also personally so that you are looked after, enjoy the whole experience and can deliver your best.

03

More Options Than Any Other Foundation

As the exclusive delivery centre for NCUK, DIFC offers you full guaranteed access to the NCUK university partner network, in addition to DIFC's own Irish and European university partners – giving you the best chance of securing a University offer.

Ireland is also home to many of the world's top Pharma companies, giving you the opportunity to gain global work experience as part of your studies.



Did You Know?

*Graduates of MPharm degrees from Ireland or UK can stay and gain work experience for up to 2 years following graduation.**

* Work permit applies to country of graduation

How does the Pharmacy Pathway Works?

The NCUK International Foundation Year offered by DIFC is a great start for students seeking to study Pharmacy or another science-related degree. It is designed specifically by universities to help international students gain entry to and succeed in their university studies.



Complete High School qualification

IGCSEs and
O Levels
accepted

English Language Qualification

Minimum IELTS
5.0 overall

NCUK International Foundation Year

English for
Academic
Purposes

Mathematics
for Science

Chemistry

Biology

Progress to Pharmacy Degree*

*Subject to meeting university admission requirements

What Will I Study?

You will study four modules on the NCUK IFY programme

Mathematics for Science

- Linear Equations
- Simple Probability
- Quadratic, Equations, Inequalities & Remainder Theorem
- Binomial Expansions, Sequences & Series
- Indices, Exponential & Logarithmic Functions
- Trigonometric Functions
- Calculus – Differentiation & Integration
- Statistics Methods & Distributions

Chemistry

- Physical chemistry
- Organic chemistry
- Inorganic chemistry
- The experimental method
- Interpretation of Scientific Data

Biology

- Structure & Function of Biological Molecules
- Organs, Tissues, Cellular Organisation & Cell Structure
- Cell Membrane Structure & Transport
- Leaf structure, Transpiration & Photosynthesis
- Respiration & Energy
- Interpretation of Scientific Data
- The Cell Cycle & Cellular Replication
- Physiological systems
- Genetics & gene technology

English for Academic Purposes

- Academic Reading, Writing, Listening & Speaking
- Using language for a range of academic purposes, including: description; comparison; explanation; evaluation; persuasion; problem solving; cause & effect; and argument
- Selecting information and ideas from different sources & using this to support an academic argument
- Reflecting on & critiquing academic texts
- Communicating more effectively in a global & academic environment
- Developing understanding of the conventions of good academic practice

UNIVERSITY FOUNDATION PROGRAMME



Quick Facts

- Age: **17+**
- Education: **Completion of a minimum of 11 years of schooling, subject to entry requirements**
- English language level: **IELTS 5.0 or equivalent**
- Intake: **September and January**
- Centre: **Dublin**
- Duration: **6 or 9 months**
- Tuition Fees: **€15,600 plus registration**
- Average Class Size: **Max 15 students**

Sample Timetable

	9.00-9.50	10.00-10.15	11.00-11.50	12.00-12.50	13.00-14.00	14.00-14.50	15.00-15.50	16.00-16.50
Mon	EAP		Maths		Lunch	Biology		Maths Support
Tue	Chemistry		Biology		Lunch	Maths		Tutorial/ Private Study
Wed	Individual Tutorial	Maths Tutorial	Private Study	Chemistry Tutorial	Lunch	Group Tutorial	Private Study	Chemistry Drop-in
Thur	EAP		Chemistry		Lunch	Private Study	Group Tutorial	Private Study
Fri	Private Study			Assessment Support	Lunch	EAP		

€2,000 Pharmacy Pathway Scholarship



Students on the Pharmacy Pathway will automatically be awarded a €2,000 scholarship* against their Foundation Year tuition fees for 2020/21 academic year.

** Students can only avail of one scholarship in an academic year.*



“My Foundation studies with DIFC gave me the best preparation! I have achieved first-class grades in my first and second years so far at LJMU and I strongly believe this would have not been possible without my foundation programme at DIFC. Learning vital research skills and tools has been a lifesaver for my research papers at university and helped me save a significant amount of time.

Being a non-native English speaker, the EAP classes have helped me develop my academic writing skills which has been key for my success during university. More importantly, the personal support I received from the team at DIFC has been essential to help me accustom to life in a new environment and set me up for success.”

Marc Nouagbe

International Foundation Year – Science 2017

Now studying Pharmacy at Liverpool John Moores University

Applying to Pharmacy University

During your studies at DIFC, you will receive tailored placement support and advice to help you choose the right degree for your career path.

13. Congrats, you're off to University!

1. Career Planning:

Discuss personal and career objectives

2. Research:

Explore course options and Universities

3. Compare:

Review entry requirements against your predicted grades

4. Personal Statement:

Learn how to write a stand-out personal statement

5. DIFC University Fair:

Meet with university representatives and learn about potential scholarships

6. Application Submission:

Make 3 university applications

7. Conditional Offers:

Get your conditional offers

8. Offer Response:

Decide on your first (CF) and insurance (CI) choices

9. Accommodation & Visa:

DIFC provide support and advice to help you apply for accommodation and prepare your visa application if you are studying outside of Ireland

10. Results:

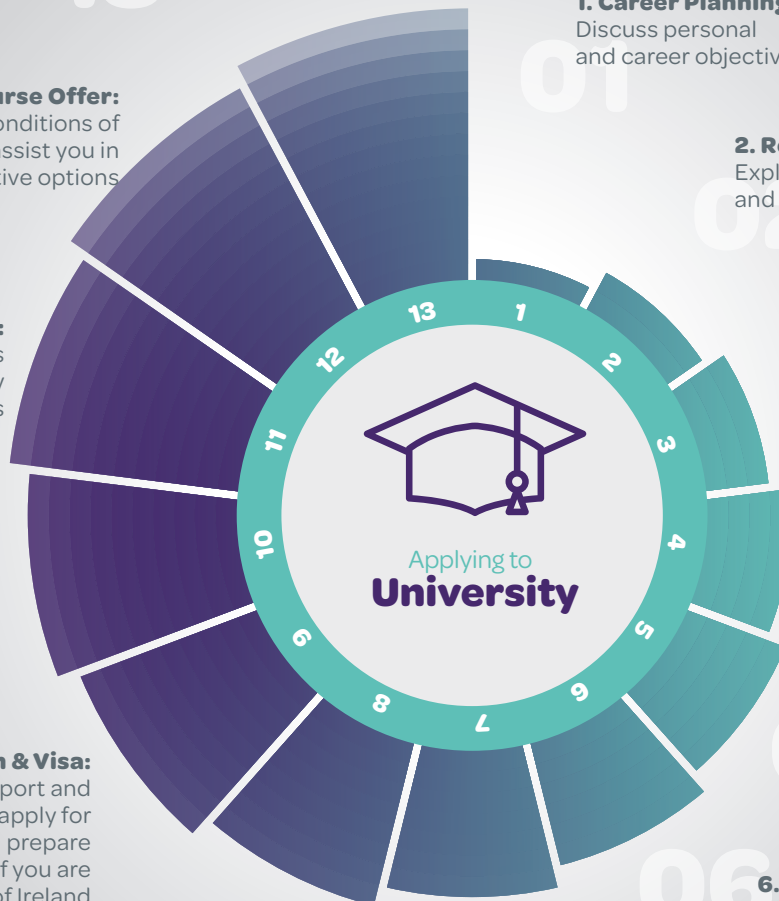
DIFC submits your results to the universities. If you meet the conditions of your CF/CI choice, your offer is made unconditional

11. Unconditional Offer:

Your place at university is confirmed once you pay your tuition fees

12. Change of Course Offer:

If you didn't meet the conditions of your offer, DIFC will assist you in applying for alternative options



Beyond Foundation

100% of students who successfully pass are guaranteed a place at one of our University partners



674 students placed in Irish universities

108 students progressed to **Top 100 ranked Universities worldwide***



1070 students successfully progressed to university



47% of UK-bound students progressed to **Russell Group universities**

190 students successfully placed onto **Medicine degrees**



273 students progressed to **UK universities**



Since 1987, NCUK has placed over

30,000

international students on to university degree courses

Student placement statistics from 2009 – 2019

* QS Rankings 2020
Students placement statistics from 2009-2019

Your NCUK International Foundation Year qualification can also lead to degrees in:



Biomedical Science



Allied Health



Physiotherapy



Biochemistry



Biology



Engineering & Technology



Chat to DIFC
Ambassadors directly at
www.difc.ie/chat

Get in Touch



We'd Love to Hear from You

DIFC UNIVERSITY
FOUNDATION
PROGRAMME

DIFC Ireland

Telephone: +353 45 866671
WhatsApp: +353 83 8534760
Email: info@difc.ie
Website: www.difc.ie

Social Media

 Facebook:
www.facebook.com/difcireland
 Instagram:
[@difcireland](https://www.instagram.com/difcireland)